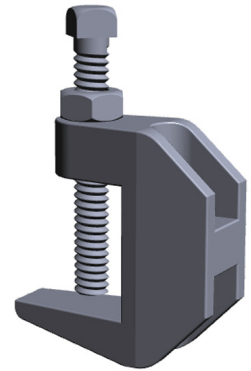


Standard C-Clamp, Universal SF Series

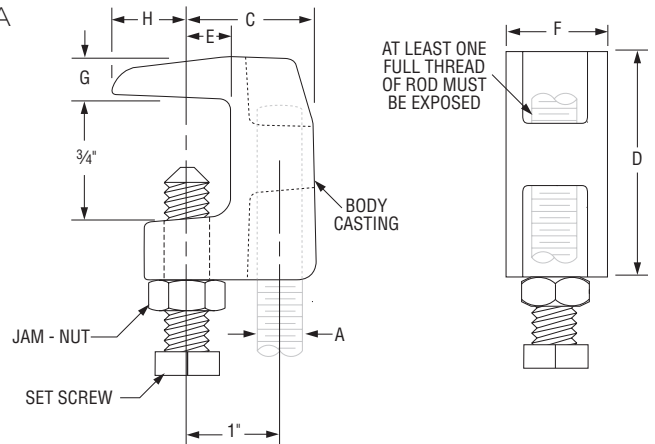
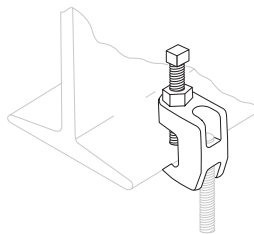
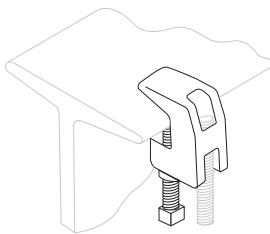
Product Features

- Size Range: 3/8" thru 5/8"
- Material: Ductile iron, hardened steel cup point set screw and locknut.
- Finish: Plain or Galvanized
- They may be attached to horizontal flanges of structural members in either the top beam or bottom beam positions.
- Thru tapping of the body casting permits extended adjustment of the threaded rod.
- Setscrew made of hardened steel.



Certifications

- Approvals: Complies with Federal Specification A-A-1192A (Type 19) and MSS SP-69 (Type 19).
UL, ULC Listed and FM Approved 1/2" only

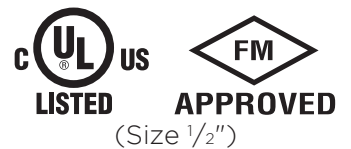


Standard C-Clamp, Universal: Loads (LBS) • Weights (LBS) • Dimensions (IN) • Torque (IN-LBS)

Rod Size A	✓ To Submit	Part No. Plain	Part No. Galv.	✓ To Submit	Set Screw Size	Torque Value	Max Loads Top	Max Loads Bottom	Wgt.	C	D	E	F	G	H
3/8"		ML36931	ML36932		3/8	84	500	250	0.34	1 1/4	1 5/8	1/2	7/8	1/4	5/8
1/2"		ML36933	ML36934		1/2	180	950	760	0.63	1 1/2	1 7/8	9/16	1 1/16	9/16	5/8
5/8"		ML36935	-		1/2	180	950	760	0.60	1 1/2	1 7/8	9/16	1 1/16	9/16	5/8

Warranty

See warranty information for more details



All dimensions listed are nominal. MAINLINE® reserves the right to make product and material changes at any time without notice.



Wide C-Clamp, Universal SF Series

Product Features

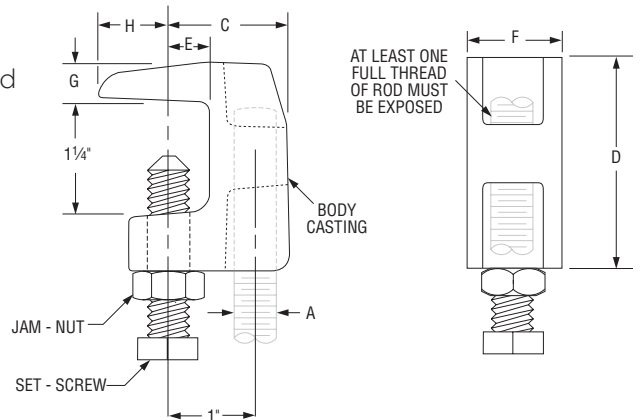
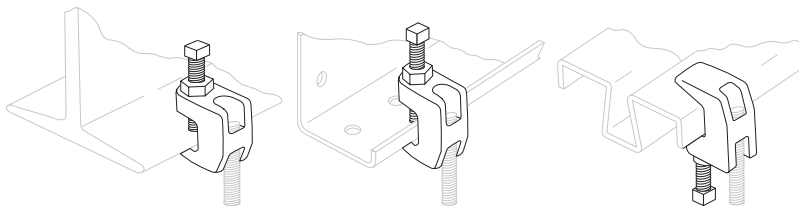
- Size Range: 3/8" and 1/2"
- Material: Ductile iron, hardened steel cup point set screw and locknut.
- Finish: Plain or Galvanized
- They may be attached to horizontal flanges of structural members in either the top beam or bottom beam positions.
- Thru tapping of the body casting permits extended adjustment of the threaded rod.
- Wider throat for attaching to flange with up to 1 1/4" thickness.



Certifications

- Approvals: Complies with Federal Specification A-A-1192A (Type 19 & 23), WW-H-171-E (Type 23), ANSI/MSS SP-69 and MSS SP-58 (Type 19 & 23).
UL, ULC Listed and FM Approved.

Caution: Secured in place by a cup-pointed Set Screw tightened against the flange. A Jam Nut is provided for tightening the Set Screw against the Body Casting. Follow recommended set screw torque values per MSS-SP-69.



Wide C-Clamp, Universal: Loads (LBS) • Weights (LBS) • Dimensions (IN) • Torque (IN-LBS)

Rod Size A	✓ To Submit	Part No. Plain	Part No. Galv.	✓ To Submit	Set Screw Size	Torque Value	Max Loads Top Bottom	Wgt.	C	D	E	F	G	H
3/8"		ML36936	ML36940		3/8	60	500 250	0.41	1 5/16	2 5/32	9/16	13/16	3/8	5/8
1/2"		ML36937	ML36941		1/2	125	950 760	0.75	1 3/8	2 11/32	1/2	1 1/16	7/16	13/16

■ Maximum temperature of 450° F

Warranty

See warranty information for more details



All dimensions listed are nominal. MAINLINE® reserves the right to make product and material changes at any time without notice.



Wide C-Clamp, Top Mount SF Series

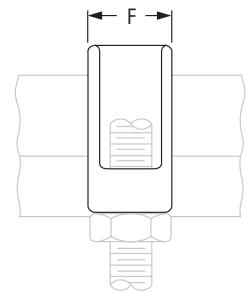
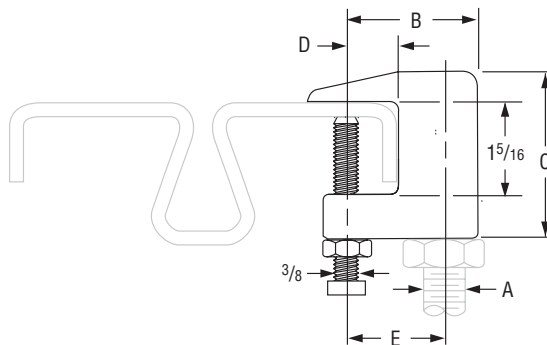
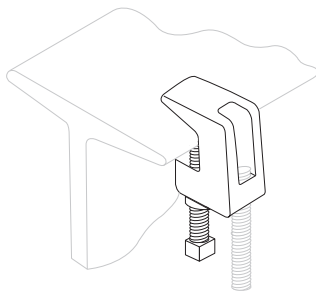
Product Features

- Size Range: 3/8" through 3/4"
- Material: Ductile iron, hardened steel cup point set screw and locknut.
- Finish: Plain or Galvanized
- Provides clamping to bar joists which are directly under roof installations.
- Provides for vertical hanger rod installed offset from the edge of the beam flange.
- Malleable iron body assures full thread engagement of rod.



Certifications

- Approvals: Complies with Federal Specification A-A-1192A (Type 19), WW-H-171-E (Type 19), ANSI/MSS SP-69 and MSS SP-58 (Type 19).
UL Listed and FM Approved.



Wide C-Clamp, Top Mount: Loads (LBS) • Weights (LBS) • Dimensions (IN) • Torque (IN-LBS)

Rod Size A	To Submit	Part No. Plain	Part No. Galv.	To Submit	Set Screw Size	Torque Value	Max Loads	Weight	B	C	D	E	F
3/8"		ML36942	-		3/8	60	1,200	0.66	1 3/4	2 1/4	3/4	1 1/4	1
1/2"		ML36943	-		3/8	60	1,200	0.66	1 3/4	2 1/4	3/4	1 1/4	1
5/8"		ML36939	ML36944		3/8	60	1,600	0.77	1 7/8	2 3/8	3/4	1 3/8	1 3/16
3/4"		ML36938	ML36945		3/8	60	1,600	0.83	1 7/8	2 3/8	3/4	1 3/8	1 3/16

Warranty

See warranty information for more details



All dimensions listed are nominal. MAINLINE® reserves the right to make product and material changes at any time without notice.



Malleable C-Clamp with Set Screw & Locknut SF Series

Product Features

- Size Range: 3/8" through 5/8"
- Material: Malleable iron clamp; hardened steel cup point set screw.
- Finish: Plain
- Installation: Follow recommended set screw torque values per MSS-SP-69.
- Malleable body assures: 1) Uniform quality and strength. 2) Full thread engagement.
- Hardened steel cup point set screw for securing to beam flange.
- Ribbed design of clamp provides added strength.

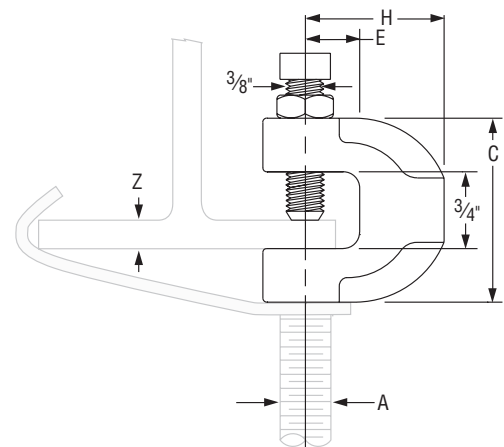


Certifications

- Approvals: Complies with Federal Specification A-A-1192A (Type 23), WW-H-171-E (Type 23), ANSI/MSS SP-69 and MSS SP-58 (Type 23).

Malleable C-Clamp with Set Screw and Locknut: Loads (LBS) • Weights (LBS) • Dimensions (IN)

Rod Size A	To Submit	Part No.	Max Load	Weight	Torque Value	C	E	H
3/8"		ML36946	400	0.28	60	1 3/4	5/8	1 3/8
1/2"		ML36947	400	0.31	60	1 3/4	5/8	1 3/8
5/8"		ML36948	440	0.42	60	2	3/4	1 1/2



Warranty

See warranty information for more details

All dimensions listed are nominal. MAINLINE® reserves the right to make product and material changes at any time without notice.

