

Pipe Riser Clamp

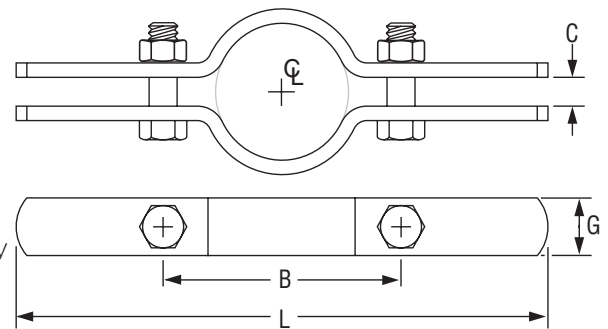
Product Features

- Size Range: 1½" through 12"
- Material: Carbon steel
- Finish: Plain or Galvanized
- Maximum Temperature: Plain 650° F, Galvanized 450° F



Certifications

- Approvals: Complies with Federal Specification A-A-1192A (Type 8), WW-H-171-E (Type 8), ANSI/MSS SP-69 and MSS SP-58 (Type 8).
UL, ULC Listed (Sizes 1½" - 8").



Caution: Clamp is fitted and bolted preferably below a coupling or welded lugs on steel pipe. Bolt torques should be per industry standards. Clamp is designed for standard steel pipe O.D. and this must be considered in sizing the riser for other types of piping.

Pipe Riser Clamp: Loads (LBS) • Weights (LBS) • Dimensions (IN)

Pipe Size	✓ To Submit	Part No. Plain	Part No. Galv.	✓ To Submit	Max Load	Weight	L	G Width	B	C	Bolt Diameter	Torque Values
1½"		ML37188	ML37198		250	1.6	10¼	1	3⅞	⅜	⅜	21
2"		ML37189	ML37199		300	1.7	10¼	1	4¼	½	7/16	32
2½"		ML37190	ML37200		400	1.9	11¼	1	4¾	½	7/16	32
3"		ML37191	ML37201		500	1.9	11¾	1	5½	½	7/16	32
4"		ML37192	ML37202		750	2.4	12⅞	1	7	½	½	46
5"		ML37193	ML37203		1,500	3.6	13¾	1½	8	½	½	46
6"		ML37194	ML37204		1,600	4.0	14¾	1½	9	½	½	46
8"		ML37195	ML37205		2,500	7.6	18½	1½	12	⅝	⅝	100
10"		ML37196	ML37206		2,500	11.1	20¼	2	13¾	⅝	⅝	100
12"		ML37197	ML37207		2,700	16.5	22¾	2	15¾	⅝	⅝	100



(UL, ULC Listed (Sizes 1½" - 8"))

Warranty

See warranty information for more details

All dimensions listed are nominal. MAINLINE® reserves the right to make product and material changes at any time without notice.



Riser Clamp - Copper

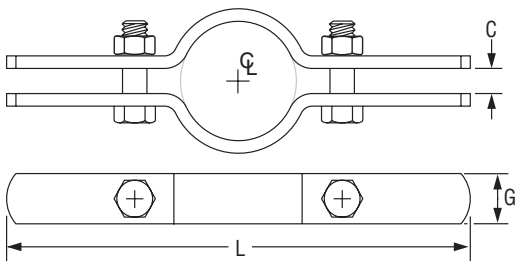
Product Features

- Size Range: 1/2" through 3"
- Material: Carbon steel
- Finish: Copper plated
- Installation: Clamp is fitted and bolted preferably below a coupling or fitting on the tubing. Do not over tighten bolts.
- Rounded ears provide greater safety for personnel.



Certifications

- Approvals: Complies with Federal Specification A-A-1192A (Type 8), WW-H-171-E (Type 8), ANSI/MSS SP-69 and MSS SP-58 (Type 8).



Riser Clamp - Copper: Loads (LBS) • Weights (LBS) • Dimensions (IN) • Torque (IN-LBS)

Tube Size	✓ To Submit	Part No.	Max Load	Weight	L	G Width	Bolt Size	Torque Values
1/2		ML37208	75	0.52	6 1/2	1	5/16	11
3/4		ML37209	75	0.56	7	1	5/16	11
1		ML37210	120	0.94	9 3/8	1 1/4	3/8	21
1 1/4		ML37211	150	0.98	9 5/8	1 1/4	3/8	21
1 1/2		ML37212	150	1.50	10	1 1/4	3/8	21
2		ML37213	150	1.50	10 3/8	1 1/4	3/8	21
2 1/2		ML37214	300	1.70	11 13/16	1 1/4	3/8	21
3		ML37215	300	1.80	11 1/2	1 1/4	3/8	21

Warranty

See warranty information for more details

All dimensions listed are nominal. MAINLINE® reserves the right to make product and material changes at any time without notice.



Short Riser Clamp

Product Features

- Size Range: 1/2" through 6"
- Material: Carbon steel
- Finish: Plain
- Maximum Temperature: 750° F
- Clamps tightly to pipe.
- Wide range of sizes.
- Equal gap design on many sizes.

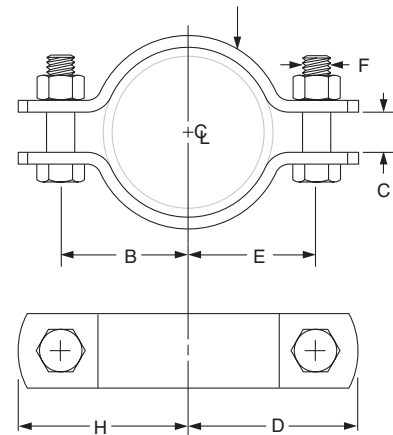


(Clamps may be furnished with square ends)

Certifications

- Approvals: Complies with Federal Specification A-A-1192A (Type 4) WW-H-171-E (Type 4), ANSI/MSS SP-69 and MSS SP-58 (Type 4). UL, ULC Listed and FM Approved.

Note: The "C" gap dimension between the clamp ears may or may not be equal at both ends of the clamp.



Short Riser Clamp: Loads (LBS) • Weights (LBS) • Dimensions (IN)

Pipe Size	✓ To Submit	Part No. Plain	Max Load for Service Temp.		Weight	B	C	E	H	D	F	G Width
			650° F	750° F								
1 1/2"		ML37216	800	—	0.43	1 9/16	1/2	1 11/16	2 3/32	2 7/32	5/16	1
2"		ML37217	1,040	930	1.10	2 1/8	1/2	2 1/8	2 3/4	2 3/4	1/2	1
3"		ML37218	1,040	930	1.40	2 7/8	5/8	2 7/8	3 1/2	3 1/2	1/2	1
4"		ML37219	1,040	930	1.80	3 1/2	5/8	3 1/2	4 1/4	4 1/4	1/2	1
6"		ML37220	1,615	1,440	5.40	4 7/8	1 1/4	4 7/8	5 3/4	5 3/4	3/4	1 1/2

Warranty

See warranty information for more details

All dimensions listed are nominal. MAINLINE® reserves the right to make product and material changes at any time without notice.

