

Riser Clamp - Plain SF Series

Product Features

- Size Range: 1½" through 12"
- Material: Carbon steel
- Finish: Plain
- Designed for standard iron pipe
- Maximum Temperature 650° F

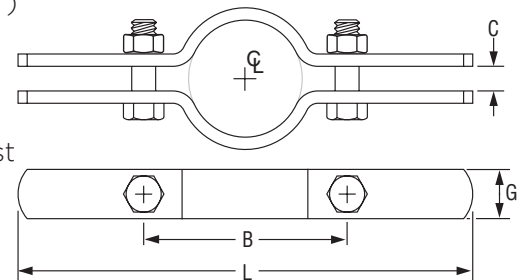


Certifications

- Approvals: Complies with Federal Specification A-A-1192A (Type 8), ANSI/SP-69 and SP-58 (Type 8) and FM Approved (1½" through 8")

Caution: Clamp is fitted and bolted preferably below a coupling or welded lugs on steel pipe. Bolt torques should be per industry standards. Clamp is designed for standard steel pipe O.D. and this must be considered in sizing the riser for other types of piping.

Note: The "C" gap dimension between the clamp ears may or may not be equal at both ends of the clamp.



Pipe Riser Clamp - Plain: Loads (LBS) • Weights (LBS) • Dimensions (IN) • Torque (IN-LBS)

Tube Size	✓ To Submit	Part No.	Max Load	Weight	L	G Width	B	C	Bolt Size	Torque Values
1½"		ML36892	250	1.08	10	1³/₁₆	3⁷/₈	³/₈	³/₈	228
2"		ML36893	300	1.16	10¼	1³/₁₆	4¼	½	³/₈	228
2½"		ML36894	400	1.32	11	1³/₁₆	4¾	½	³/₈	228
3"		ML36895	500	1.56	11¾	1³/₁₆	5½	½	³/₈	228
4"		ML36896	750	1.7	13	1	7	½	½	600
5"		ML36897	1,500	3.45	14	1⁷/₁₆	8	½	½	600
6"		ML36898	1,600	3.7	15¼	1½	9	½	½	600
8"		ML36899	2,500	7.40	18¼	1½	12	⁵/₈	⁵/₈	780
10"		ML36900	2,500	11	20	2	13¾	⁵/₈	⁵/₈	780
12"		ML36901	2,700	16.25	22¼	2	15¾	⁵/₈	⁵/₈	780

Warranty

See warranty information for more details

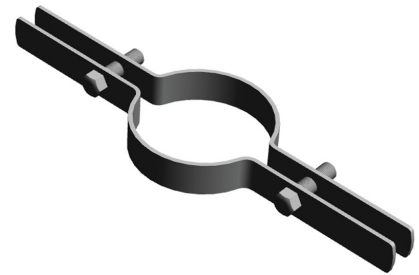
All dimensions listed are nominal. MAINLINE® reserves the right to make product and material changes at any time without notice.



Riser Clamp - Galv SF Series

Product Features

- Size Range: 1½" through 12"
- Material: Carbon steel
- Finish: Electro-Zinc Galvanized
- Designed for standard iron pipe
- Maximum Temperature 450° F

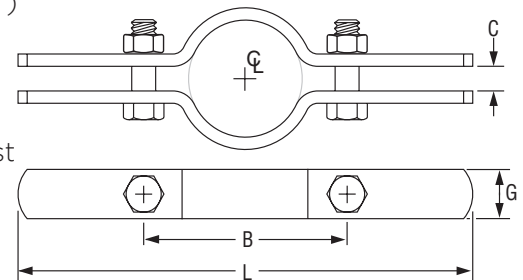


Certifications

- Approvals: Complies with Federal Specification A-A-1192A (Type 8), ANSI/SP-69 and SP-58 (Type 8) and FM Approved (1½" through 8")

Caution: Clamp is fitted and bolted preferably below a coupling or welded lugs on steel pipe. Bolt torques should be per industry standards. Clamp is designed for standard steel pipe O.D. and this must be considered in sizing the riser for other types of piping.

Note: The "C" gap dimension between the clamp ears may or may not be equal at both ends of the clamp.



Pipe Riser Clamp - Galv: Loads (LBS) • Weights (LBS) • Dimensions (IN) • Torque (IN-LBS)

Tube Size	✓ To Submit	Part No.	Max Load	Weight	L	G Width	B	C	Bolt Size	Torque Values
1½"		ML36902	250	1.08	10	1³/₁₆	3⁷/₈	³/₈	³/₈	228
2"		ML36903	300	1.16	10¼	1³/₁₆	4¼	½	³/₈	228
2½"		ML36904	400	1.32	11	1³/₁₆	4¾	½	³/₈	228
3"		ML36905	500	1.56	11¾	1³/₁₆	5½	½	³/₈	228
4"		ML36906	750	1.7	13	1	7	½	½	600
5"		ML36907	1,500	3.45	14	1⁷/₁₆	8	½	½	600
6"		ML36908	1,600	3.7	15¼	1½	9	½	½	600
8"		ML36909	2,500	7.40	18¼	1½	12	⁵/₈	⁵/₈	780
10"		ML36910	2,500	11	20	2	13¾	⁵/₈	⁵/₈	780
12"		ML36911	2,700	16.25	22¼	2	15¾	⁵/₈	⁵/₈	780

Warranty

See warranty information for more details

All dimensions listed are nominal. MAINLINE® reserves the right to make product and material changes at any time without notice.



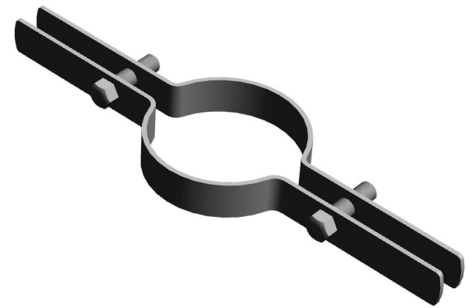
Riser Clamp - Copper SF Series

Product Features

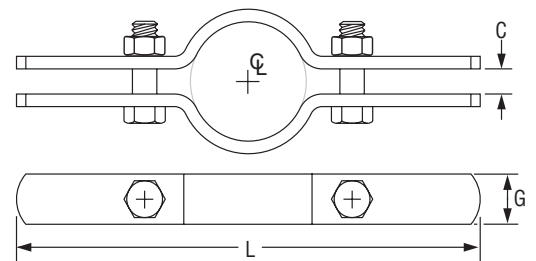
- Size Range: 1/2" through 3"
- Material: Carbon steel
- Finish: Copper-colored Epoxy
- Designed for copper tubing
-

Certifications

- Approvals: Complies with Federal Specification A-A-1192A (Type 8), ANSI/SP-69 and SP-58 (Type 8).



Note: The "C" gap dimension between the clamp ears may or may not be equal at both ends of the clamp.



Riser Clamp - Copper: Loads (LBS) • Weights (LBS) • Dimensions (IN) • Torque (IN-LBS)

Tube Size	✓ To Submit	Part No.	Max Load	Weight	L	G Width	Bolt Size	Torque Values
1/2		ML36912	75	1.05	9	1 ³ / ₁₆	3/8	228
3/4		ML36913	75	1.00	9	1 ³ / ₁₆	3/8	228
1		ML36914	120	1.05	9	1 ³ / ₁₆	3/8	228
1 1/4		ML36915	150	1.10	9	1 ³ / ₁₆	3/8	228
1 1/2		ML36916	150	1.08	10	1 ³ / ₁₆	3/8	228
2		ML36917	150	1.16	10 ¹ / ₄	1 ³ / ₁₆	3/8	228
2 1/2		ML36918	300	1.32	11	1 ³ / ₁₆	3/8	228
3		ML36919	300	1.56	11 ³ / ₄	1 ³ / ₁₆	3/8	228

Warranty

See warranty information for more details

All dimensions listed are nominal. MAINLINE® reserves the right to make product and material changes at any time without notice.



Short Riser Clamp SF Series

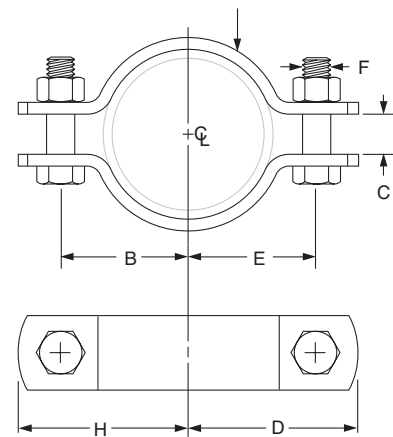
Product Features

- Size Range: 1/2" through 6"
- Material: Carbon steel
- Finish: Plain
- Maximum Temperature: 750° F
- Designed for standard iron pipe
- Wide range of sizes.
- Equal gap design on many sizes.

Certifications

- Approvals: Complies with Federal Specification A-A-1192A (Type 8)
ANSI/SP-69 and SP-58 (Type 8).

Note: The "C" gap dimension between the clamp ears may or may not be equal at both ends of the clamp.



Short Riser Clamp: Loads (LBS) • Weights (LBS) • Dimensions (IN)

Pipe Size	✓ To Submit	Part No. Plain	Max Load for Service Temp.		Weight	B	C	E	H	D	F	G Width
			650° F	750° F								
1 1/2"		ML36920	800	715	0.43	1 3/4	3/8	1 3/4	2 1/8	2 1/8	1/4	1
2"		ML36921	1,040	930	0.89	2 1/16	1/2	2 1/16	2 1/2	2 1/2	3/8	1
3"		ML36922	1,040	930	1.20	2 13/16	5/8	2 13/16	3 1/4	3 1/4	3/8	1
4"		ML36923	1,040	930	1.86	3 3/8	3/4	3 3/8	4 1/6	4 1/6	3/8	1 13/16
6"		ML36924	1,615	1,440	5.10	4 7/8	7/8	4 7/8	6	6	1/2	1 1/2

Warranty

See warranty information for more details

All dimensions listed are nominal. MAINLINE® reserves the right to make product and material changes at any time without notice.

